



## Summer Adventure Parent Handbook (215) 247-5777 ex127

### About Our Program

The Morris Arboretum of the University of Pennsylvania is an educational institution that promotes an understanding of the important relationships between people and plants. Summer is a time to create new blossoming friendships, while cultivating old ones. It is a time to observe Arboretum animals, celebrate nature, discover the world around us, and make fun memories with Summer Adventure Camp friends.

For almost a decade, our camp has grown from just a handful of children, to a sold-out thriving educational program. We offer a variety of themes to appeal to every interest of our curious campers, taught by talented teachers who dedicate their time throughout the school year to classrooms of students. We are delighted that your child will be spending their days making sweet summer memories at the Morris Arboretum. In 2017, the Arboretum expanded our adventure camp by adding a special program designed for four and five year old campers called Little Lightning Bugs.

Our youngest adventures, Little Lightning Bugs (ages four and five), will spend their summer headquartered on the garden side of the Arboretum, where most public events take place. Parents park in our lot (rain or shine), and meet our counselors at the Widener Visitor Center at both drop off and pick up.

Our more experienced campers, Bloomfield Buddies (ages six and ten), are headquartered on the other side of the Arboretum on Bloomfield Farm. Bloomfield Farm is a wonderful place for our campers to explore, as it's filled with wildlife, lush meadow paths that are freshly mowed daily, honey bee hives, and our Springfield Mill.

### Weather & Clothing

Camp is held **rain or shine**. In the case of inclement weather, activities will be modified and moved indoors. Please dress your child in clothes that can get dirty! Hats, t-shirts, and sneakers are strongly encouraged. **Flip Flops and open-toes shoes are NOT permitted.** Water shoes and bathing suits are appropriate to wear on water days. Please be sure that your child is covered with sunscreen and insect repellent before their arrival to camp. The Hillcrest Building (Little Lightning Bugs) is air-conditioned. Bloomfield Barn (Bloomfield Buddies) is not air-conditioned, however, multiple fans are mounted on the wall.

### What to Bring

Campers should bring a **lunch, snack, a refillable water leak proof water bottle, a change of clothes, and water shoes** marked with their names to camp each day. A backpack or small bag may be helpful in carrying these items. Less is more! Be sure to label all items with child's name. Please do not bring toys, phones, cameras, electronic devices, money or valuables to camp. The fewer items that your child carries with them the better!

### Camper Code of Conduct

Our camp environment is informal, but structured. Campers will be informed of Arboretum rules and etiquette on the first day of camp. All campers are expected to respect each other, as well as the Arboretum staff, plants and wildlife. Disruptive behavior affects the fun, safety, and overall quality of the camp experience. In the event of repeated misbehavior, counselors will notify the parent/guardians and request that the camper be picked up or dismissed. No refunds will be given to campers dismissed.

### **Safety & Medical information**

Summer Adventure Camp is an outdoor camp that incorporates physical activity. Nature interpretation and hikes to different areas of the Morris Arboretum may have hidden dangers (*including but not limited to*: risk of bee stings, poison ivy, ankle sprains, and exposure to ticks and mosquitoes). Camp staff are trained in administering first aid, and will contact authorized medical personnel in the case of an emergency. In the event of an emergency during camp hours, please contact (215) 247-5777, or ask a Visitor's Services representative to reach our camp counselors, who will be called on portable radios.

### **Sun, Mosquitoes & Ticks**

If you choose for your child to use sunscreen and/or insect repellent, please apply it prior to camp. Counselors will apply as needed with permission (see Registration Form). While ticks have not posed a problem in the past, we suggest that tick checks be done when campers are home. Neem oil is a natural critter deterrent.

### **Registration Policies**

Register on-line ([http://www.morrisarboretum.org/ed\\_summerAdventureCamp.shtml](http://www.morrisarboretum.org/ed_summerAdventureCamp.shtml)). A completed Registration Form, Parent Permission & Liability Form, and health insurance info must be submitted **two weeks after the on-line registration has been completed** in order to hold a camper's place in the program.

### **Cancellation Policies**

Refunds will be made if notification of cancellation is received at least 14 days prior to camp start date. Please kindly provide advanced notice of your cancellation so that another child may have the opportunity to attend. A **\$50** processing fee will be deducted from refunds. The Morris Arboretum reserves the right to cancel camp due to insufficient registrations.

### **Morris Arboretum Membership**

Arboretum members receive a member discount on summer camp and a number of other great benefits. To learn more about becoming a member contact the Membership Office at (215) 247-5777.

### **Frequently asked questions**

- **Are counselors required to submit a background check?**  
The Morris Arboretum abides by hiring procedures mandated by the University of Pennsylvania. All Morris Arboretum counselors, staff, and volunteers must be vetted through a three point background check and approved by the Human Resources department of the University of Pennsylvania.
- **What should I do if my child cannot attend camp one day?**  
If your child is sick, please notify the camp counselors or call (215) 247-5777 ext. 127.
- **Can I send my child home with another parent?**  
Alternates can be arranged by calling (215) 247-5777 ext. 127, or by email ([tifstahl@upenn.edu](mailto:tifstahl@upenn.edu))
- **What happens if I am late dropping off or picking my child up?**  
Drop off begins at 9:00am each day. If a camper will be late, please call (215) 247-5777 and leave a message. Pick up is at **3:00pm**. Campers picked up after 3:15 will be charged a late fee.
- **Can I stay at the Arboretum after I drop my child off?**  
Unfortunately, parents and family cannot stay on the grounds after a child is dropped off.

## Drop off & Pick Up Procedures

### Little Lightning Bugs

**Drop Off/Pick up Location:** Widener Visitor Center

**Drop off:** 9:00am

**Pick up:** 3:00pm

Campers ages 4 and 5 will begin and end their camp day at the Widener Visitor Center, accessed from the main entrance on Northwestern Avenue. Please park in the parking lot and walk to the Widener Plaza to sign-in or sign-out your child with a camp counselor. If you have a child in both programs of camp, please consider dropping off your youngest one first. **Curbside drop-off and pick up in front of the Widener Building is not permitted due to our high volume of bus traffic.** If you arrive before 9am, please wait outside the Widener Building with their child until a counselor is present. During inclement weather, please go straight to the café tent, or in the Widener Visitor Center to pick up. Campers will be permitted to leave with **authorized adults** (as listed on the Registration Form). If you need to make changes to this list, please email Tiffany Stahl (tifstahl@upenn.edu) or call (215) 247-5777 and speak with an Arboretum staff member. Please be respectful to Counselors and Arboretum staff and pick up your camper no later than 3:00 each day.

### Bloomfield Buddies

**Car Line Drop Off/Pick up Location:** Bloomfield Farm (see map on next page)

**GPS Address:** 303 East Northwestern Ave. Flourtown, PA

(Directly across the road from the Arboretum's main entrance)

**Drop off:** 9:00am

**Pick up:** 3:00pm

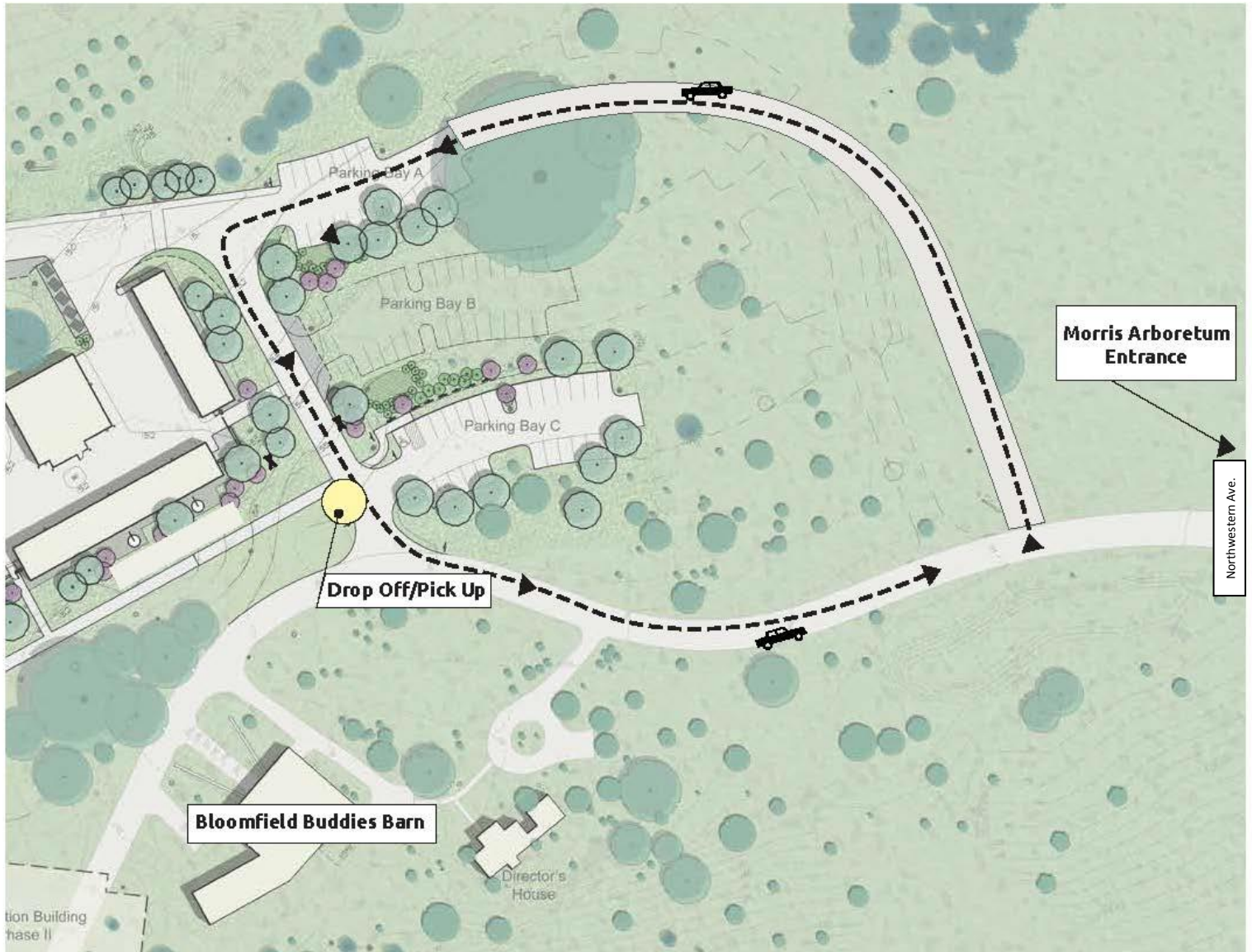
Bloomfield campers will be dropped off and picked in a car line across the street from the Arboretum Garden at Bloomfield Farm. A map (see below) will also be emailed to all Bloomfield Buddy parents a week before camp begins. Follow the arrow signs around to the pick-up/drop-off location. There will be lots of signs to guide you 😊. On the first day of camp, a counselor will give you a name card to place on your visor when your child exits the car at the DROP OFF HERE sign. Please have your visor down at pick up so that counselors can identify which camper belongs to you. Please drive slowly as horticulture staff and township employee's use these roads as well. Students should exit the car on the *passenger side only* at designated the pick up and drop off spot. We also kindly ask that parents and guardians remain in the car line so that traffic flows naturally.

Campers will be permitted to leave only with authorized adults (as listed on the Registration Form). If you need to make changes to this list, please email Tiffany Stahl (tifstahl@upenn.edu) or call (215) 247-5777 and speak with an Arboretum staff member.

PLEASE SEE BELOW FOR THE Bloomfield car line map. Thank you!

**Bloomfield Buddies Car Line Map (Campers age 6 to 10 only)**

We promise to have lots of signs at Bloomfield to help guide you. ☺



More Questions? Please contact Tiffany Stahl 215-247-5777 ex127, or via email [tifstahl@upenn.edu](mailto:tifstahl@upenn.edu)  
We are looking forward to seeing you!